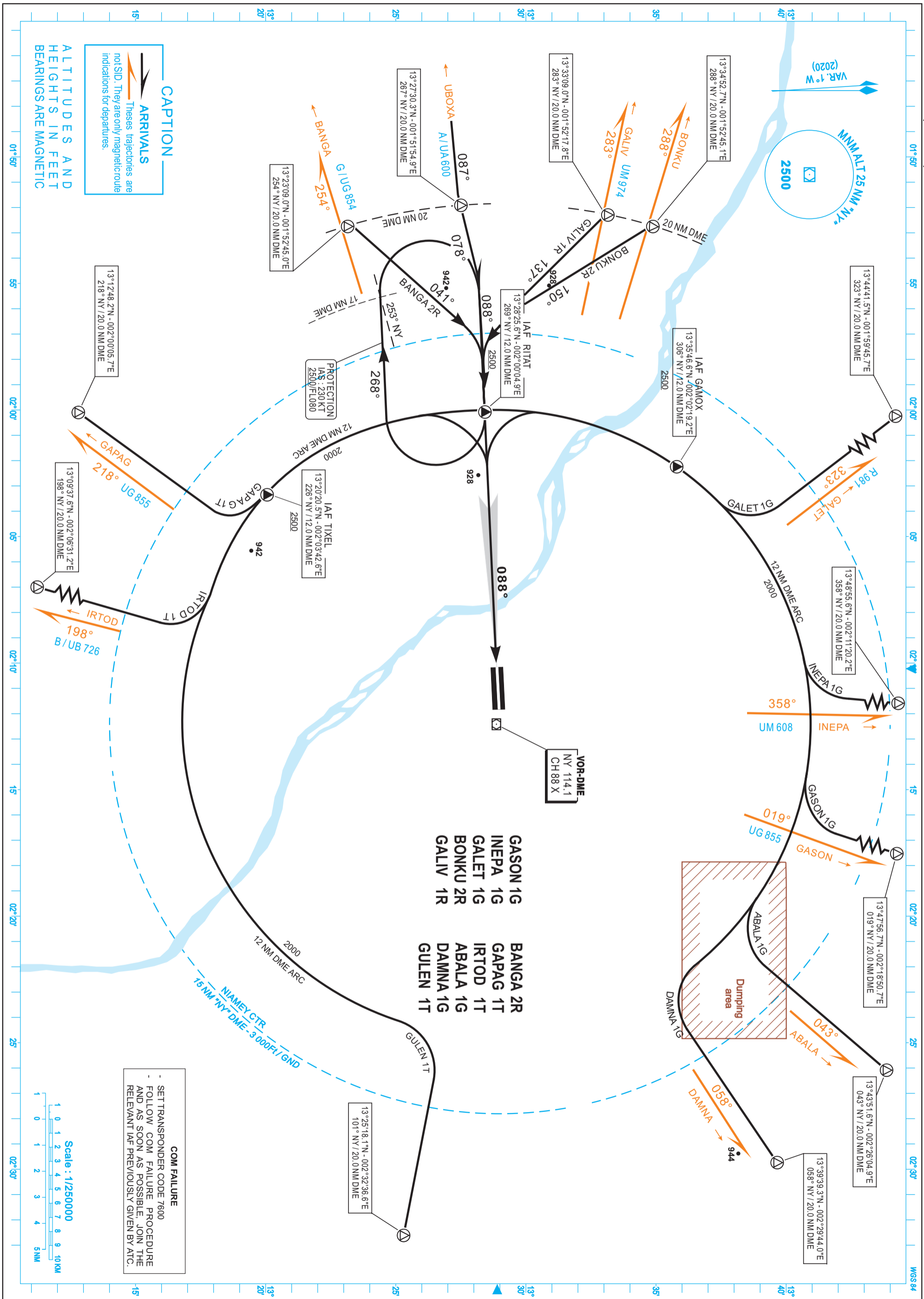


STANDARD ARRIVAL CHART
INSTRUMENT (STAR) - ICAO

TRANSITION ALTITUDE
3800

APP 131.3
TWR 119.7

WGS 84



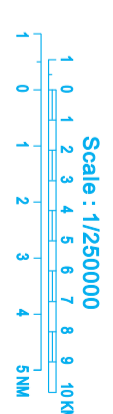
CAPTION

ARRIVALS
These trajectories are not SID. They are only magnetic route indications for departures.

ALTITUDES AND HEIGHTS IN FEET BEARINGS ARE MAGNETIC

COM FAILURE

- SET TRANSPONDER CODE 7600
- FOLLOW COM FAILURE PROCEDURE AND AS SOON AS POSSIBLE, JOIN THE RELEVANT IAF PREVIOUSLY GIVEN BY ATC.



CORRECTIONS : First edition

12AD2-DRRN-STAR-VORDME09R

AERONAUTICAL INFORMATION SERVICE - ASECNA

AMDT 05/22

19 MAY 2022